

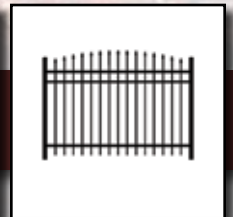
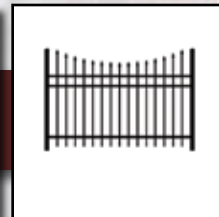
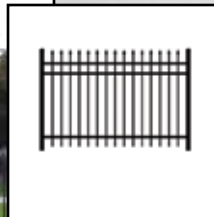


**COURTYARD**<sup>®</sup>  
ALUMINUM FENCE SYSTEMS

*Virtually Maintenance Free  
Lifetime Warranty<sup>s</sup>*

# HUNDRED SERIES

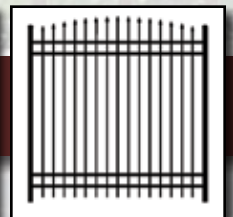
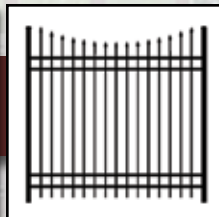
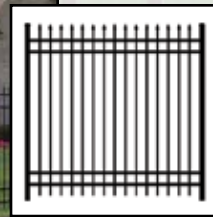
## *Residential Aluminum Fence*



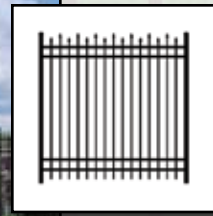
**Model 0131 - 3 Rail - with Spears**  
Heights: 36", 42", 48" & 60" • Length: 6' Sections



**Model 0132 - 3 Rail - w/Alt. Spears**  
Heights: 36", 42", 48" & 60" • Length: 6' Sections

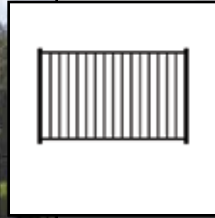


**Model 0141 - 4 Rail - with Spears**  
Height: 72" • Length: 6' Sections

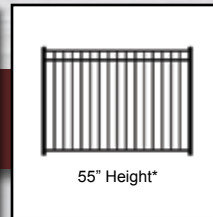


**Model 0142 - 4 Rail - w/Alt. Spears**  
Height: 72" • Length: 6' Sections

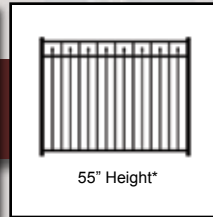
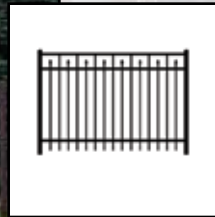
# Residential



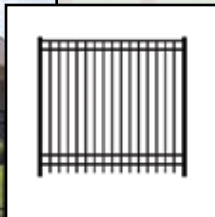
**Model 0220 - 2 Rail - Flat Top**  
Height: 48"\* • Length: 6' Sections



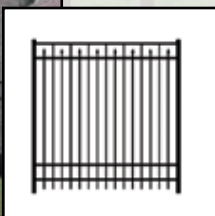
**Model 0230 - 3 Rail - Flat Top**  
Heights: 36", 42", 48", 55"\* & 60" • Length: 6' Sections



**Model 0233 - 3 Rail - Flat Top w/Alt. Spears**  
Heights: 36", 42", 48", 55"\* & 60" • Length: 6' Sections



**Model 0240 - 4 Rail - Flat Top**  
Height: 72" • Length: 6' Sections



**Model 0243 - 4 Rail - Flat Top w/Alt. Spears**  
Height: 72" • Length: 6' Sections

\* Meets National Pool Code Requirements for Height and Spacing.  
Check Local Pool Code Requirements.

# Features & Special Options

- **Verified AAMA 2604-05 Compliant Powder Coated Aluminum Fence.**  
**Posts: 6063 - T5 • Rails: 6063 - T6 • Pickets: 6063 - T52**
- **No Screws -**  
**Patented Hidden E-Clip** (Patent #US 7,152,849 B2)  
**Patented Rail Locks** (Patent #US 7,134,647 B2)
- **Gates - All Rails and Pickets are Welded.**
- **Lifetime Warranty<sup>§</sup>.** § 30-Year for Government, Municipalities and Corporations
- **Standard Sections... Rack - 12" in 6'.**
- **Assembled Sections for Quick Installation.**
- **Eliminate Freight Damage with Company Owned Trucks and Securely Packaged Loads.**

## Colors



DS1 101 Satin Black    DS1 106 Black Fine Texture    DS1 103 Metallic Bronze    DS1 107 Metallic Bronze Fine Texture    DS1 111 Evergreen    DS1 104 Gloss Beige    DS1 102 Gloss White    DS1 110 Gold (optional)

Colors shown are a close representation of the true color. Please consult actual samples for accurate powder coating colors.



Finials



Post Caps



Touch Up Cans and Pens



Ring Assembly



Gold Accent Powder Coating (Optional)



Rail Profile



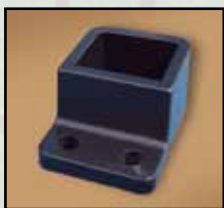
ELIMINATE SCRATCHES

Hidden Rail Locks  
(Patent #US 7,134,647 B2)



No UNSIGHTLY SCREWS!

Hidden E-Clip Fasteners  
(Patent #US 7,152,849 B2)



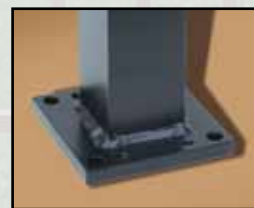
Wall Mount



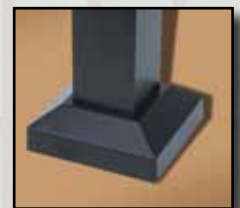
Swivel Mount



Post Mount



Welded Plate



Post Flair

# SPECIFICATIONS

## Hundred Series

	<b>0131</b>	<b>0132</b>	<b>0141</b>	<b>0142</b>	<b>0220</b>
Fence Heights	36", 42", 48", 60"	36", 42", 48", 60"	72"	72"	48"
Posts	2" x 2" x .060" wall w/6' centers	2" x 2" x .060" wall w/6' centers	2" x 2" x .090" wall w/6' centers	2" x 2" x .090" wall w/6' centers	2" x 2" x .060" wall w/6' centers
Gate Posts	2" x 2" w/Inserts = .310" Wall	2" x 2" w/Inserts = .310" Wall	2" x 2" w/Inserts = .215" Wall	2" x 2" w/Inserts = .215" Wall	2" x 2" w/Inserts = .310" Wall
Post Caps	2" Flat Cap/Standard 2" Ball Cap/Optional	2" Flat Cap/Standard 2" Ball Cap/Optional	2" Flat Cap/Standard 2" Ball Cap/Optional	2" Flat Cap/Standard 2" Ball Cap/Optional	2" Flat Cap/Standard 2" Ball Cap/Optional
Rails	1" Height x .080" Wall x 1 1/8" Width x .055" Wall	1" Height x .080" Wall x 1 1/8" Width x .055" Wall	1" Height x .080" Wall x 1 1/8" Width x .055" Wall	1" Height x .080" Wall x 1 1/8" Width x .055" Wall	1" Height x .080" Wall x 1 1/8" Width x .055" Wall
Pickets	5/8" x 5/8" x .045" Wall	5/8" x 5/8" x .045" Wall	5/8" x 5/8" x .045" Wall	5/8" x 5/8" x .045" Wall	5/8" x 5/8" x .045" Wall
Picket Spacing	3.792" between Pickets	3.792" between Pickets	3.792" between Pickets	3.792" between Pickets	3.792" between Pickets
Finial Option	Triad, Quad	Triad, Quad	Triad, Quad	Triad, Quad	

	<b>0230</b>	<b>0233</b>	<b>0240</b>	<b>0243</b>
Fence Heights	36", 42", 48", 55"*, 60"	36", 42", 48", 55"*, 60"	72"	72"
Posts	2" x 2" x .060" wall w/6' centers	2" x 2" x .060" wall w/6' centers	2" x 2" x .090" wall w/6' centers	2" x 2" x .090" wall w/6' centers
Gate Posts	2" x 2" w/Inserts = .310" Wall	2" x 2" w/Inserts = .310" Wall	2" x 2" w/Inserts = .215" Wall	2" x 2" w/Inserts = .215" Wall
Post Caps	2" Flat Cap/Standard 2" Ball Cap/Optional	2" Flat Cap/Standard 2" Ball Cap/Optional	2" Flat Cap/Standard 2" Ball Cap/Optional	2" Flat Cap/Standard 2" Ball Cap/Optional
Rails	1" Height x .080" Wall x 1 1/8" Width x .055" Wall	1" Height x .080" Wall x 1 1/8" Width x .055" Wall	1" Height x .080" Wall x 1 1/8" Width x .055" Wall	1" Height x .080" Wall x 1 1/8" Width x .055" Wall
Pickets	5/8" x 5/8" x .045" Wall	5/8" x 5/8" x .045" Wall	5/8" x 5/8" x .045" Wall	5/8" x 5/8" x .045" Wall
Picket Spacing	3.792" between Pickets	3.792" between Pickets	3.792" between Pickets	3.792" between Pickets
Finial Option		Triad, Quad		Triad, Quad

\* Meets National Pool Code Requirements for Height and Spacing. Check Local Pool Code Requirements.

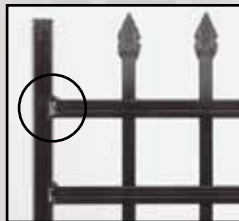
## Strong Welded Gates



Standard Walk Gate



U-Frame Walk Gate



**CourtYard® Gates**  
All Rails and Pickets are welded.

- Hundred Series Gates use Non-corrosive Hardware.
- Single Gates up to 10' Wide. • Double Gates up to 20' Wide.



Locking Latch



Self-Closing Wall Hinge



**Circle of Commitment**  
Dynamic • Solutions • Innovation

**Manufacturing & Distribution Facilities:**

- Bremen, IN • Randleman, NC • Sarcoxie, MO • Valdosta, GA



Manufacturer of Verified Components



Quality Products By:



D I S T R I B U T E D B Y :

