

Beauty. Strength. Durability.

Aluminum Entry Gates



Entry Gates

Aluminum U-Frame Gates

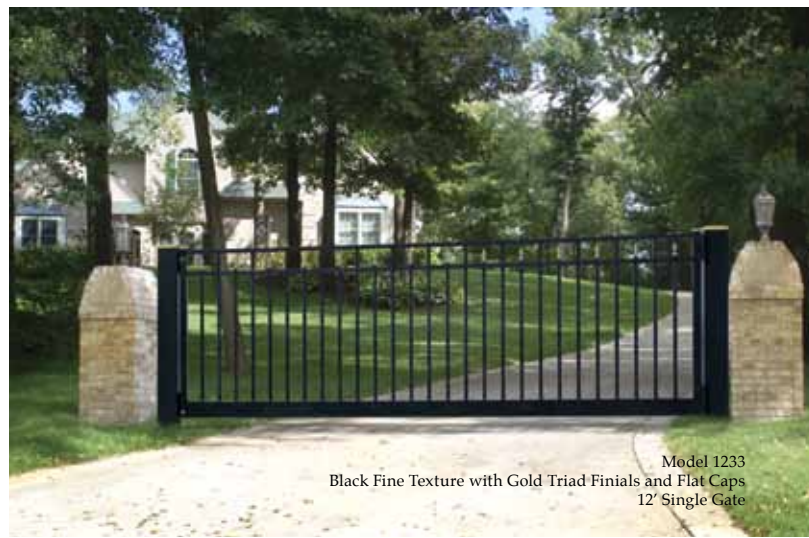


Model 1131R with Continuous Arch
Bronze Fine Texture with Gold Rings and Ball Caps
16' Double Gate

U-Frame Gate Features

- Strong Heavy-Duty U-Frame Construction.
- All Gates Welded - No Screws.
- Elegant Streamlined Design.
- Meets ASTM Standards for Automatic Gate Openers.
- Eliminates Bracing for Single Gates 12' and Under.
- Heavy Wall Gate Posts.
- Single Gates up to 16' Wide.
- Double Gates up to 32' Wide.
- Verified AAMA 2604-05 Compliant Powder Coated Aluminum Gates Standard.
- Verified AAMA 2605-05 Compliant Powder Coating Upgrade Available.

Front Cover Photo
Model 1131R with Designer Arch and Short Picket Option
Evergreen with Gold Rings, Quad Finials and Flat Caps
20' Double Gate



Model 1233
Black Fine Texture with Gold Triad Finials and Flat Caps
12' Single Gate

Aluminum Walk Gates

Standard and U-Frame Gates



Model 1230R
Satin Black
36" Wide Single Gate



Model 1230
Satin Black
72" Wide Single Gate with Bracing

Standard Walk Gate Features

- Available: "Standard" and "Perfect-Fit" Styles.
- Single Gates: 36", 42", 48", 60" and 72".
- Double Gates: 72", 84", 96", 120" and 144".
- Bracing used on single gates over 48" wide and double gates over 96" wide.



Model 1233
Black Fine Texture with Gold Triad Finials
48" Wide Single Gate with Arch Option

U-Frame Walk Gate Features

- Standard "U-Frame" Gates.
- Single Gates: 36", 42", 48", 60" and 72".
- Double Gates: 72", 84", 96", 120" and 144".
- No Bracing Required with "U-Frame" Gates.

Colors

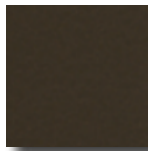
Standard Colors Shown Below - Custom Colors Available



DSI 101
Satin Black



DSI 106
Black Fine Texture



DSI 103
Metallic Bronze



DSI 107
Metallic Bronze
Fine Texture



DSI 111
Evergreen



DSI 104
Gloss Beige



DSI 102
Gloss White



DSI 110
Gold Option

Colors shown are a close representation of the true color.
Please consult actual samples for accurate powder coating colors.



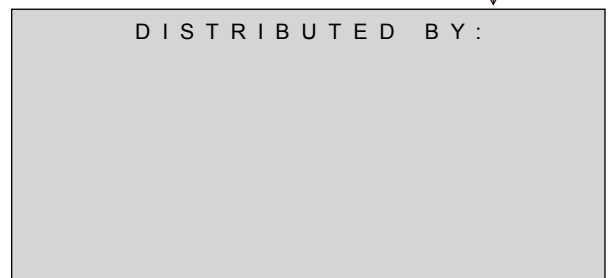
Circle of Commitment
Dynamic • Solutions • Innovation

Manufacturing Plants:

- Bremen, IN
- Randleman, NC
- Sarcoxie, MO
- Valdosta, GA



Quality Products By:



www.diggerspecialties.com

SP09/09 99658